

Package Products

Last Modified on 28/09/2021 1:22 pm EDT

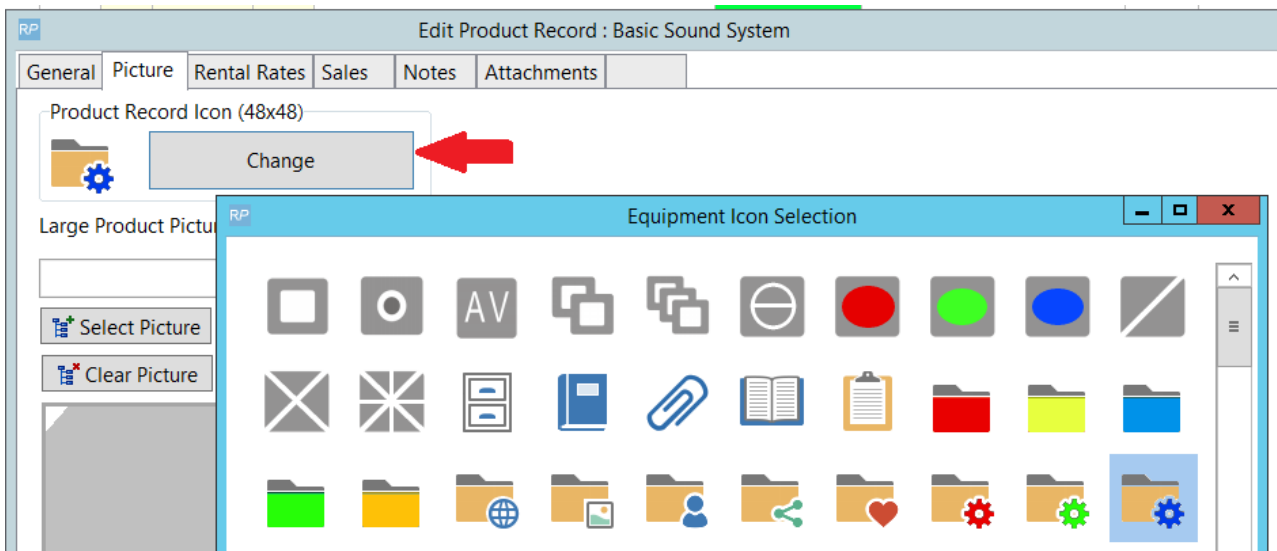
Package Products

A package is used when you would like to set up a group of items/products that would have a package price when booked together.

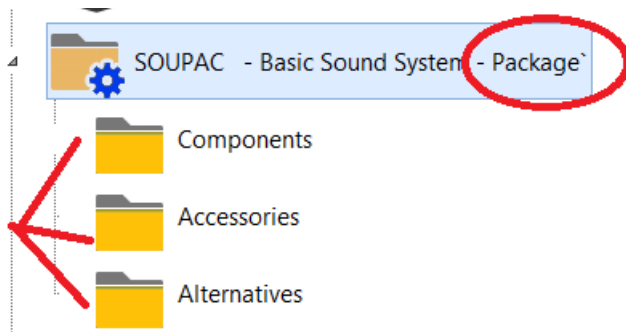
- Set up your package product first. Identify the item as a package product under the general tab-->configuration section as outlined below.
- Since package product have their own pricing (under the rental rates tab), you may choose to mark the product as 'Don't allow product to be discounted' so that no further booking discounts can be applied to this product. *See Pricing Parameter 13 to prevent all package products from being discounted by default*

The screenshot shows the 'Edit Product Record : Basic Sound System' window. The 'General' tab is selected, and the 'Product Information' section contains fields for Product Code (SOUPAC), Description (Basic Sound System), Model No., and Colour. The 'Product Options' section includes checkboxes for 'For Individual Rental / Sale', 'Don't allow product to be discounted' (checked), 'Product is a Generic Item', 'List on Web Catalog', 'Expand When Added to a Booking', 'Exclude From Data Export', 'Auto Checkout this Item', 'Warehouse active' (checked), and 'When Cross rented, the cost is freight'. The 'Configuration' section has radio buttons for 'Single item', 'Package product' (selected), and 'Macro product'. Red arrows point to the 'Don't allow product to be discounted' checkbox and the 'Package product' radio button.

Consider changing the Product Record Icon to further visually identify the 'Package' Product via the Picture tab



- The product will be identified as a package in the Inventory Tree with folders for components, accessories and alternatives



Package Pricing

The Price for a package product is set under the Rental Rates tab of the package product.

When added to a booking, the individual prices of package components are displayed beside each component BUT NOT used in price calculations, instead the package price is used.

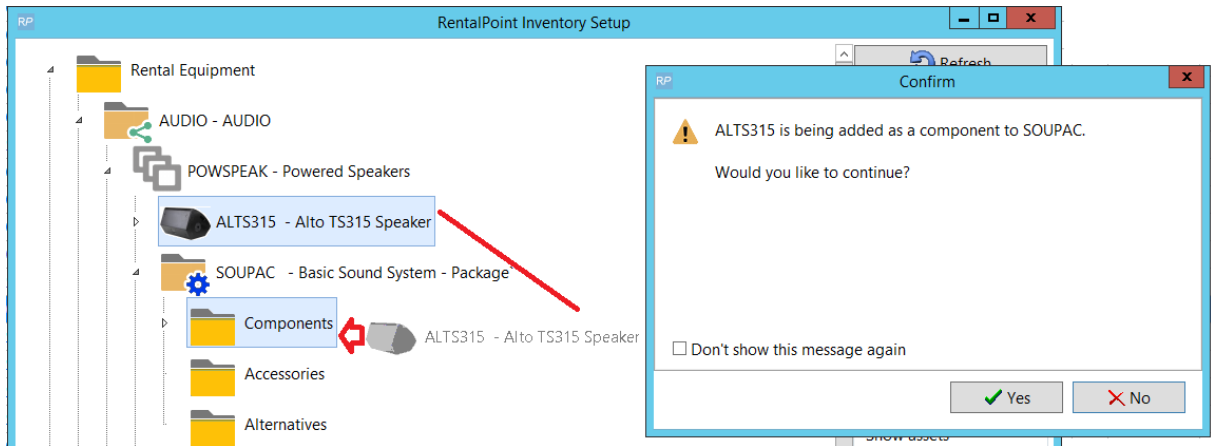
- See *Operational Parameter 104* to distribute package price to all components when displayed on the equipment grid of a booking.
- See *Pricing Parameter 13* to prevent all package products from being discounted by default

Edit Product Record : Basic Sound System									
RP									
General Picture Rental Rates Sales Notes Attachments									
	1st Day	Extra Da	Weekly	Long Ter	Uses	Currency	Minimum	Replac	
	Rate	Rate	Rate	Rate	Price Factor Table		Rental	Value	
Standard	800.0000	800.0000	3200.000	12000.00	Standard	Domesti	0.0000	0.0000	
Members	0.0000	0.0000	0.0000	0.0000	Standard	Domesti	0.0000	0.0000	

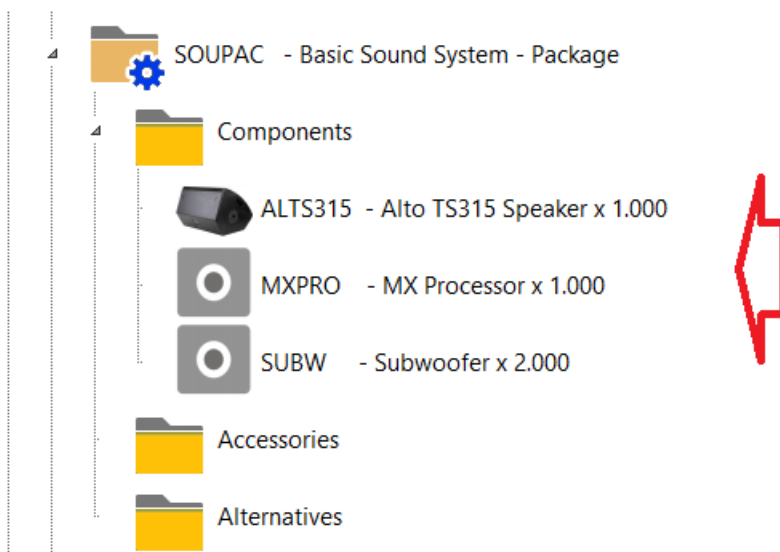
Adding Items to a Package

- Now that the package product exists, drag and drop *existing products* into the package

components folder to make them part of the package



- All components added and their quantities will show up in the components folder



- Accessories and alternatives can also be added in the same way as they are added to a regular product

Packages on the Booking

- When a package is added to a booking, all components are added as part of the package. Package components that in turn have product components will also be added i.e. ALTS315 has two components identified by the + sign to the left of the package component.

Code	Description	Quantity	Avail	Short
SOUPAC	Basic Sound System	1	See	List
ALTS315	Alto TS315 Speaker	1	4	0
MXPRO	MX Processor	1	10	0
SUBW	Subwoofer	2	5	0

- Click the + icon to expand the view to product components

Code	Description	Quantity	Avail	Short
SOUPAC	Basic Sound System	1	See	List
ALTS315	Alto TS315 Speaker	1	4	0
TS315CAS	Alto TS315 Speaker CASE	1	5	0
TS315CAB	TS315 10' Cable	1	10	0
MXPRO	MX Processor	1	10	0
SUBW	Subwoofer	2	5	0

Package Availability

Package availability is calculated from the sum of the individual components required to complete the package. When one of the items for the package is short, then the package will show short on the booking.

Below the MX Processor and Subwoofers are short, so the SOUPAC package shows short...

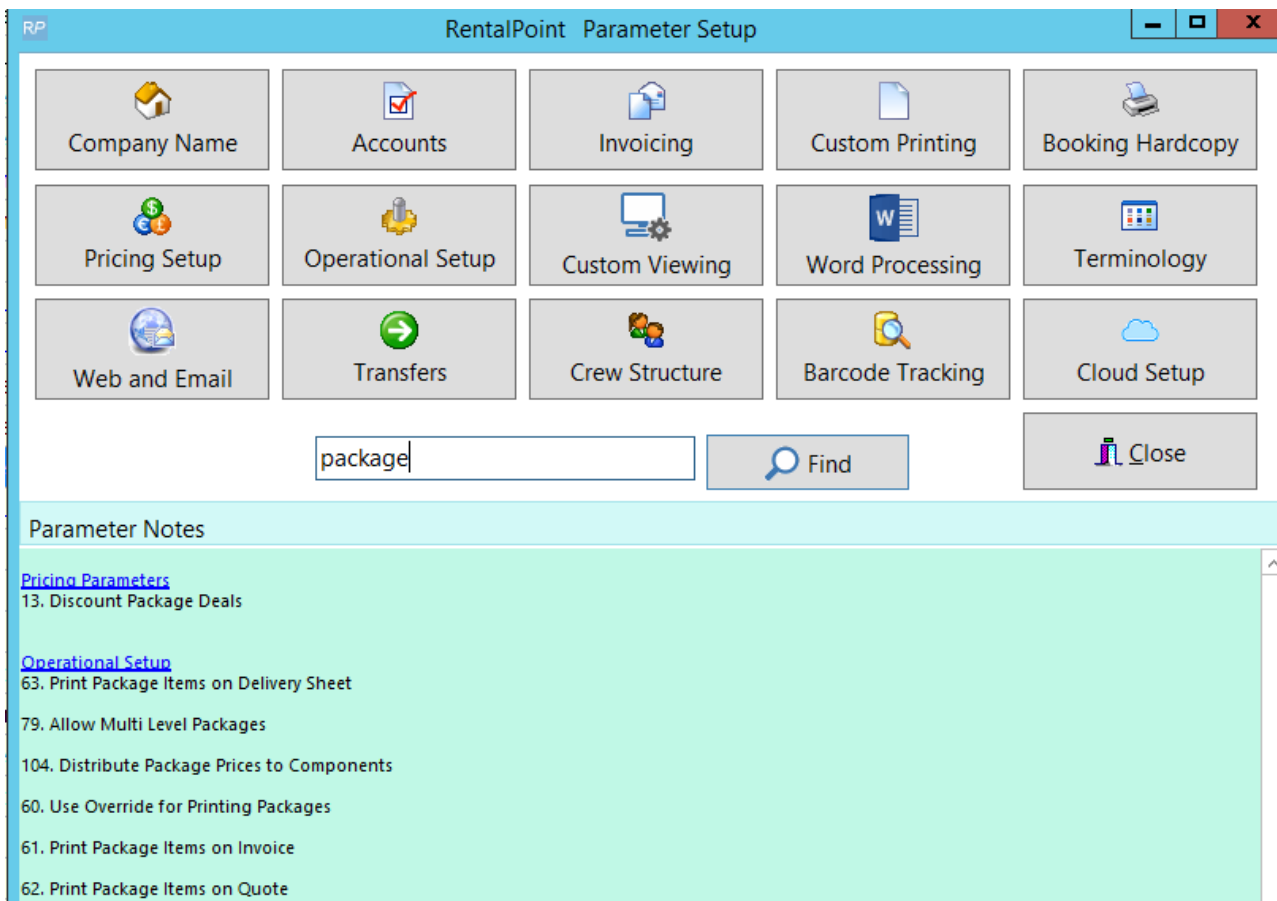
Code	Description	Quantity	Avail	Short
SOUPAC	Basic Sound System	1	See	List
ALTS315	Alto TS315 Speaker	1	4	0
TS315CAS	Alto TS315 Speaker CASE	1	5	0
TS315CAB	TS315 10' Cable	1	10	0
MXPRO	MX Processor	1	0	1
SUBW	Subwoofer	2	0	2

Once shortages for the individual items are addressed, the package will show as available

Code	Description	Quantity	Avail	Short
SOUPAC	Basic Sound System	1	See	List
ALTS315	Alto TS315 Speaker	1	4	0
TS315CAS	Alto TS315 Speaker CASE	1	5	0
TS315CAB	TS315 10' Cable	1	10	0
MXPRO	MX Processor	1	10	0
SUBW	Subwoofer	2	5	0

Package Parameters

From the main menu, click Setup-->Parameters, then type 'package' in the search box to see all parameters that are available to customize your use of packages in RentalPoint



Packages on Documentation

The print options in package setup below are used in conjunctions with Operational Parameters (outlined above)

and RTF insert fields

- Blank Line After Packages &PACKBLC&
- Include Package Components &INCCOMPC&
- Exclude Package Components &XCOMPC&
- Bold Package Products &BPACKC&
- Indent Package Components &INDPARTC&

For Fast Report Documentation, see report options on the individual templates for existing options to include/omit/indent package components

RP Edit Product Record : Basic Sound System

General Picture Rental Rates Sales Notes Attachments

Product Information

Product Code SOUPAC

Description Basic Sound System

Model No.

Colour

Printing Descriptions Printing Options



Active for printing on all Client facing documents

Print Product On Sub Rental P.O. ?

When this product is a component - whether to print

Active for printing on all Client facing documents

Suppress from delivery schedule



Future Package Use

Click here for an SQL query detailing [Future Package Use](#) in RentalPoint