

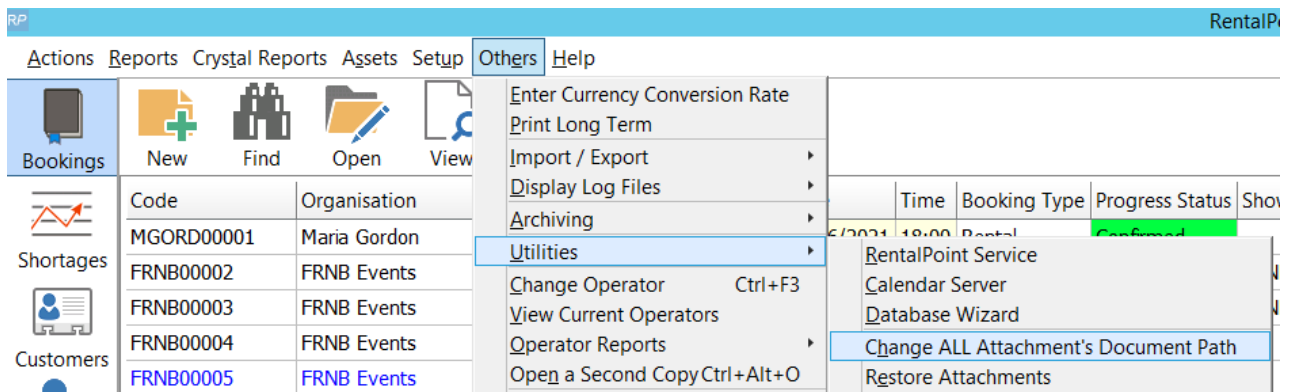
# Change Document Paths

Last Modified on 29/07/2021 1:09 pm EDT

## Change Attachments Documents Path

The Change All Attachments Document Path is a utility used to perform maintenance on documents that are generated by RentalPoint. When a document is generated in RentalPoint a path is saved that tells the system where it resides. If the location of the files change, you need to update RentalPoint with the new file location. This utility updates all document paths to the new location.

Access the utility via the RentalPoint main menu Others-->Utilities-->Change Attachment Documents Path



This utility does not move the files for you. It saves the path of the new location. Custom documents will save to the new location from this point forward.

Specify the new location where the documents are stored.

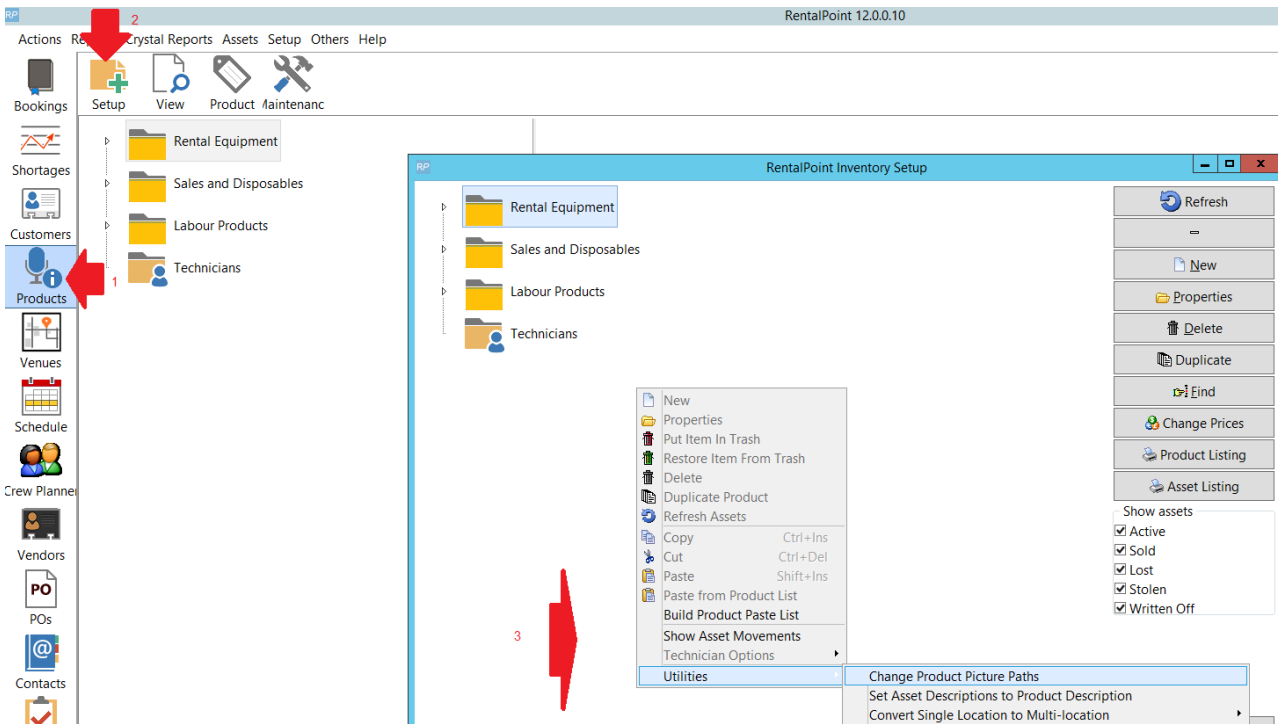
The screenshot shows a dialog box titled "Change Attachment File Paths" with a blue border and a close button (X) in the top right corner. The dialog is divided into several sections:

- Options:** Two radio buttons are present. The first, "Change All Attachments", is selected. The second, "Change Only Attachments with Selected Path", is unselected.
- Old Document Path:** A text input field contains the path "E:\RentalPointV11\DOCS\". To its right is a "Browse" button with a folder icon.
- New Document Path:** A text input field also contains the path "E:\RentalPointV11\DOCS\". To its right is another "Browse" button with a folder icon.
- Instructions:** A paragraph of text reads: "The document folder is used to store quotes and custom printouts and should be located on the server, it's default name is 'Docs'."
- Checkboxes:** A checkbox labeled "Change Document Path for Items in 'Others' Folder" is checked.
- Buttons:** At the bottom right, there are two buttons: "OK" with a green checkmark icon and "Cancel" with a red X icon.

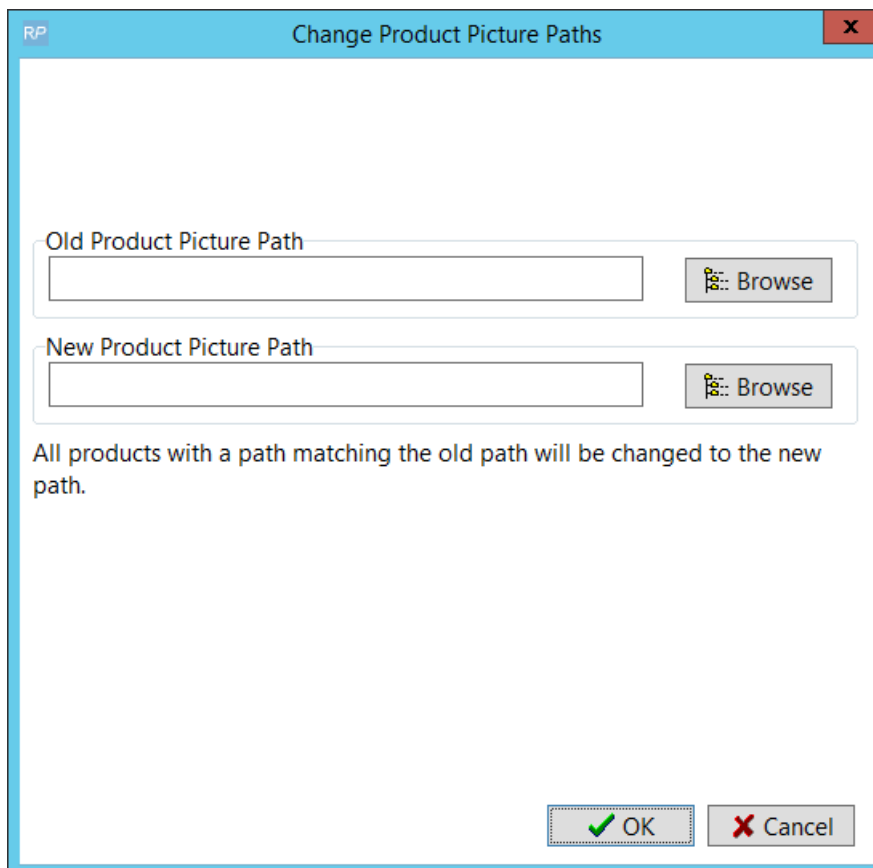
## Change Product Picture Paths

When a picture is attached to a product in Inventory Setup, RentalPoint stores the directory path to the picture file in the database so that it can be easily accessed when needed. If the location of the picture file changes, you need to update RentalPoint with the new file location. This utility updates all inventory picture paths to the new location.

From the Inventory Setup Window, right click anywhere in the window-->utilities-->Change Product Picture Paths



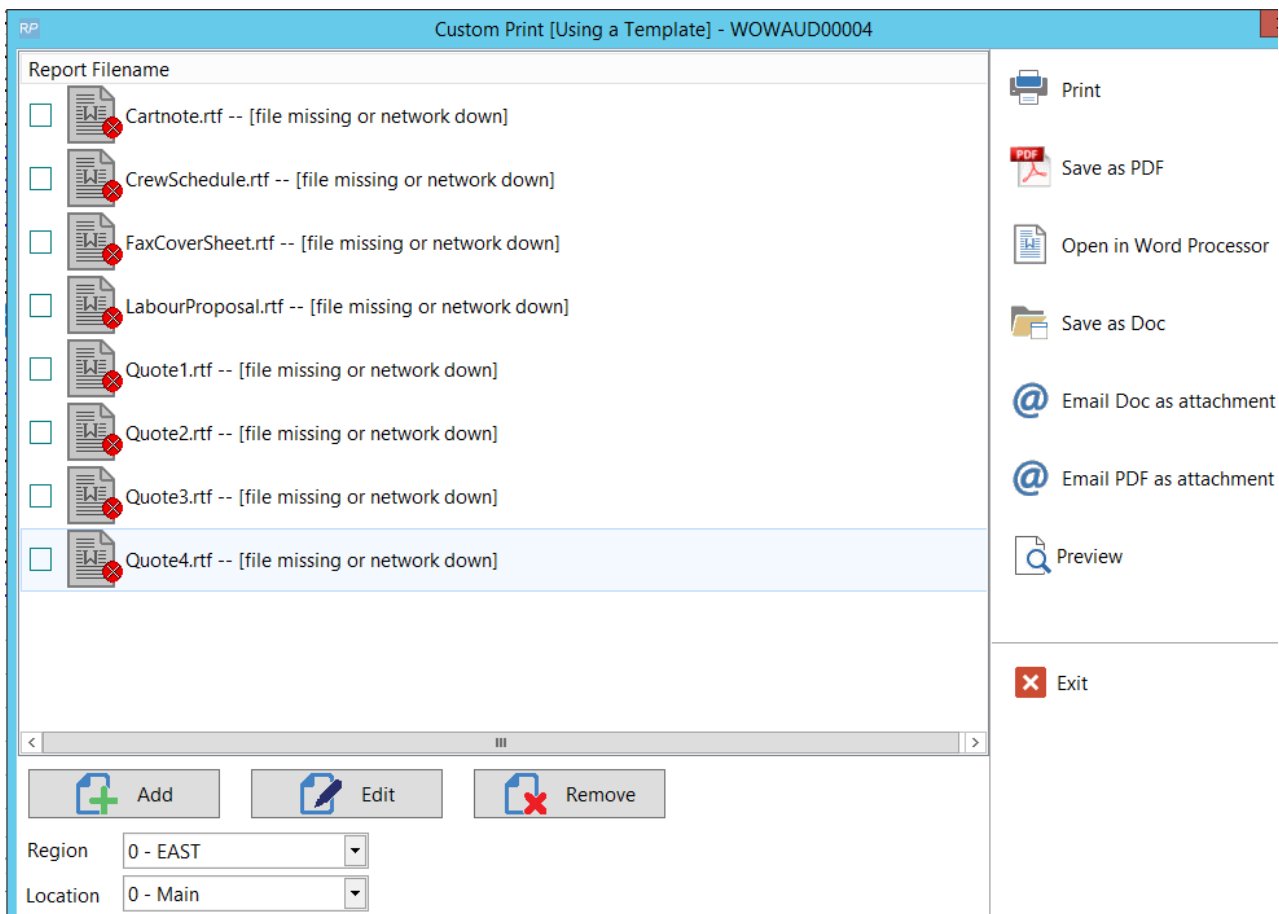
Then enter the old and new paths as needed



## Change Path for RTF and Fast Report Templates

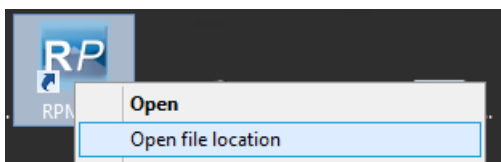
If your RTF template files are moved to a different location, you'll need to let RentalPoint know

where to find them, otherwise you'll get a 'file missing or network down' error as illustrated below.



RTF and Fast Report templates folders are set in your RentalPoint configuration file  
c:\rentalpoint\sys\rpini.ini

The file location may differ depending on what folder name you used to install RentalPoint. To find your configuration file, right click on the icon you use to run RentalPoint, then click open file location



Then open RPINI.INI in Notepad

sys

iew

System (C:) > RentalPoint > sys

Name	Date modified	Type	Size
p2sodbc.dll	16/03/2019 13:16	Application extens...	280 KB
pdfout.dll	16/03/2019 13:16	Application extens...	48 KB
pg32conv.dll	16/03/2019 13:16	Application extens...	98 KB
RentalPointInsertFieldModule.wll	16/03/2019 13:16	Word.Addin.8	967 KB
RepairDatabase.exe	13/12/2019 10:50	Application	15,000 KB
RPCalendarServer.exe	25/11/2019 08:33	Application	7,482 KB
RPCrystalViewer.exe	18/04/2018 10:28	Application	224 KB
RPINI.exe	29/11/2019 14:30	Application	3,659 KB
RPIni.ini	16/01/2020 14:54	Configuration sett...	1 KB
RPScanner.e			
RPSettings.e			
secman.dll			
SQLAuthTer			
sscsdk80.dll			

File Edit Format View Help

```

[DIRECTORIES]
HPSYS_DIR=C:\RentalPoint\sys
CONFIGFILEPATH=C:\RentalPoint\sys
HPDATA_DIR=C:\RentalPoint\data
HPDOCS_DIR=C:\RentalPoint\docs
ARCHIVEDOCSPATH=
HPROOT_DIR=C:\RentalPoint
HPREPORTS_DIR=C:\RentalPoint\reports
TEMPLATES_DIR=C:\RentalPoint\docs\Templates
FR_TEMPLATES_DIR=C:\RentalPoint\docs\FastReportTemplates
[DATABASE]
DATABASENAME=RentalPoint
SERVERNAME=srv01\sqlexpress
SQLPROVIDER=
[LOGIN]
USESQLAUTH=0
LOGINNAME=
PASSWORD=
PasswordIsEncrypted=0

```

13 bytes, Date modified: 16/01/2020 14:54

Southern Sound Quo...

Ensure the TEMPLATES\_DIR and FR\_TEMPLATES\_DIR point to valid locations where the corresponding template files can be found

Templates

Share View

This PC > System (C:) > RentalPoint > docs > Templates

Name	Date modified	Type	Size
BookingHardcopy_GdocsF.rtf	16/03/2019 13:16	Rich Text Format	75 KB
Cartnote_GdocsF.rtf	16/03/2019 13:16	Rich Text Format	1,275 KB
CreditNote_GdocsF.rtf	16/03/2019 13:16	Rich Text Format	1,291 KB
CrewSchedule_GdocsF.rtf	16/03/2019 13:16	Rich Text Format	156 KB
CustomerInfoSheet_GdocsF.rtf	16/03/2019 13:16	Rich Text Format	1,286 KB
DeliverySheet_GdocsF.rtf	16/03/2019 13:16	Rich Text Format	1,295 KB
Deposit Invoice_GdocsF.rtf	16/03/2019 13:16	Rich Text Format	1,363 KB
Final Invoice_SepLabour_GdocsF.rtf	16/03/2019 13:16	Rich Text Format	1,332 KB
FinalInvoice_GdocsF.rtf	16/03/2019 13:16	Rich Text Format	1,321 KB
Invoice_GdocsF.rtf	16/03/2019 13:16	Rich Text Format	1,905 KB
InvoiceLooksLikeStandard_GdocsF.rtf	16/03/2019 13:16	Rich Text Format	1,328 KB
Labor Proposal_GdocsF.rtf	16/03/2019 13:16	Rich Text Format	1,295 KB
ManuallInvoice_GdocsF.rtf	16/03/2019 13:16	Rich Text Format	1,871 KB
MasterBill_Invoice detail line.rtf	16/03/2019 13:16	Rich Text Format	1,328 KB

FastReportTemplates

File Home Share View

This PC > System (C:) > RentalPoint > docs > FastReportTemplates

Name	Date modified	Type	Size
Alternative Billing Invoice - Default.frtpl	16/03/2019 13:16	FRTPL File	6 KB
Asset History Report - Default.frtpl	16/03/2019 13:16	FRTPL File	2 KB
Audit Trail General Report - Default.frtpl	16/03/2019 13:16	FRTPL File	2 KB
Booking Hardcopy - Default.frtpl	16/03/2019 13:16	FRTPL File	3 KB
Booking Hardcopy with Group - Default.f...	07/11/2019 13:21	FRTPL File	8 KB
Cartnote - Default.frtpl	15/08/2019 09:47	FRTPL File	3 KB
Collection Docket (CD) - Default.frtpl	07/11/2019 13:21	FRTPL File	6 KB
Collection Docket (I) - Default.frtpl	16/03/2019 13:16	FRTPL File	5 KB
Cost Estimate - Default.frtpl	16/03/2019 13:16	FRTPL File	6 KB
Crew Schedule - Default.frtpl	16/03/2019 13:16	FRTPL File	3 KB
Crew Task Report - Default.frtpl	16/03/2019 13:16	FRTPL File	3 KB
Cross Rental - Default.frtpl	16/03/2019 13:16	FRTPL File	4 KB
Customer Info Sheet - Default.frtpl	16/03/2019 13:16	FRTPL File	3 KB
Delivery Sheet - Default.frtpl	16/03/2019 13:16	FRTPL File	5 KB

71 items