

Rental Inventory Export

Last Modified on 31/05/2022 1:44 pm EDT

The query below will provide an export of all Rental Equipment. Each line is a separate field with the first 3 in Bold being mandatory for importing back into the system. Please contact support@rentp.com before attempting an import for the first time.

This will export Rental Items only [<see here for Sales Inventory Export>](#)

SELECT

G.Group_code AS [Product Group],
G.group_descV6 AS [Group Description],
IM.category AS [Product Category],

C.cat_descV6 AS [Category Description],
IM.product_code AS [Product Code],
IM.on_hand AS [Quantity Owned],
IM.descriptionV6 AS [Product Description],

IM.PrintedDesc AS [Printed Description],
R.rate_1st_day AS [Rate1st Day],
R.rate_week AS [Rate Week],
IM.unit_volume AS [Unit Volume],
IM.unit_weight AS [Unit Weight],
IM.rLength AS [Unit Length],
IM.rWidth AS [Unit Width],
IM.rHeight AS [Unit Height],
IM.CountryOfOrigin AS [Country of Origin],
IM.cost_price AS [Cost price],
IM.retail_price AS [Retail Price],
IM.wholesale_price AS [Wholesale Price],
IM.trade_price AS [Trade Price],

IM.asset_track AS [Asset Track],
IM.NonTrackedBarcode AS [Non Tracked Barcode],
IM.MfctPartNumber AS [Part Number],
IM.zModelNo AS [Model Number],
IM.BinLocation AS [Product Bin Location]

FROM dbo.tblInvmas AS IM LEFT OUTER JOIN
 dbo.tblGroup AS G ON G.Group_code = IM.groupFld LEFT OUTER JOIN
 dbo.tblCategory AS C ON C.category_code = IM.category LEFT OUTER JOIN
 dbo.tblRatetbl AS R ON R.ProductCode = IM.product_code AND R.tableNo = 0

WHERE (IM.product_type_v41 = 0)

ORDER BY [Product Group], [Product Category], [Product Code]

Assets are stored in a separate Table and should be Exported Separately via the query below

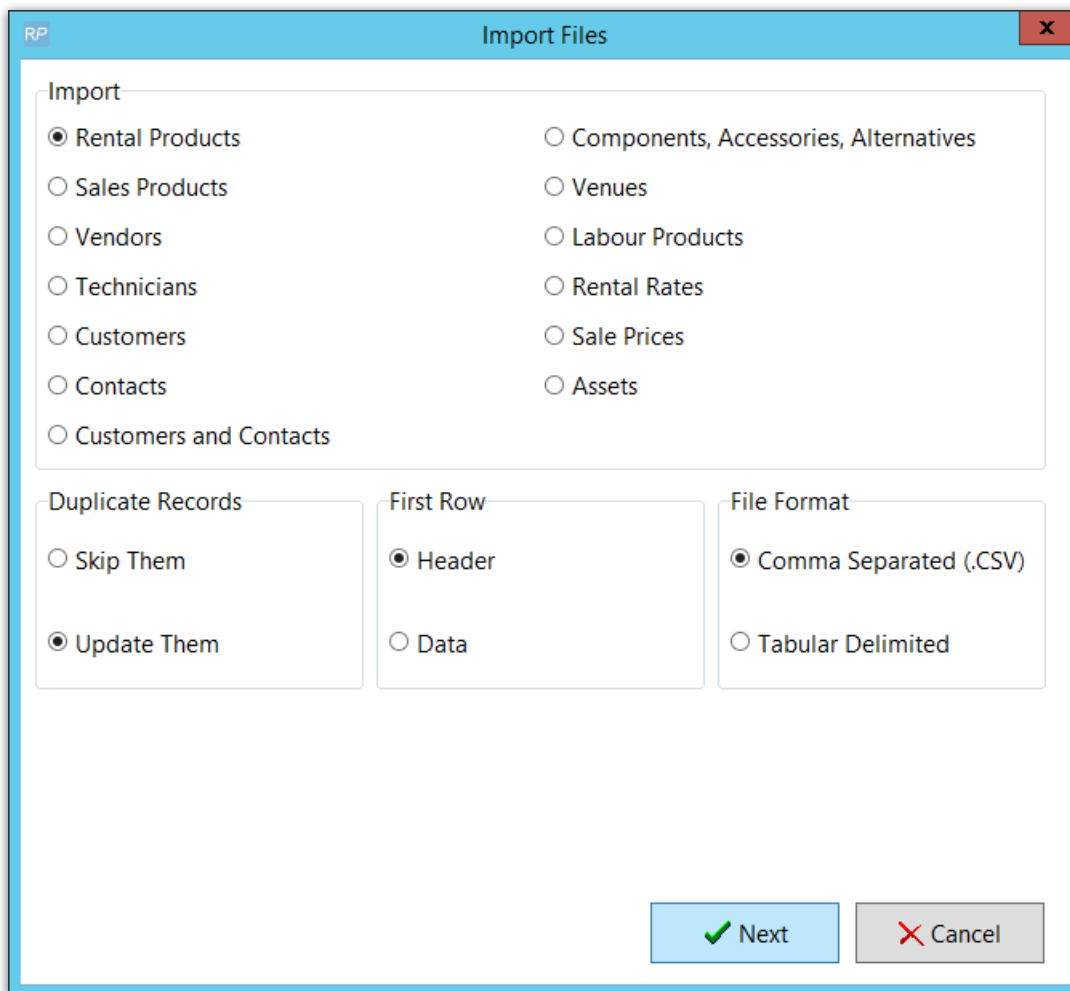
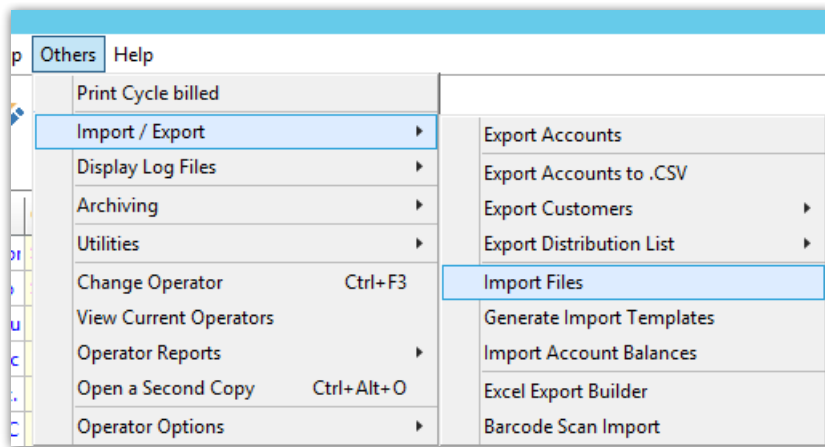
```
select asset_code as [Barcode],  
  
    DESCRIPTION as [Asset Description],  
  
    PRODUCT_CODE as [Product_code],  
  
    SERIAL_NO as [Serial No.],  
  
    VendorV8 as [Vendor Code],  
  
    location as [Bin Location],  
  
    COST as [Cost Price],  
  
    modelNumber as [Model No.],  
  
    INSURER as [Insurer],  
  
    method_tax as [Depreciation Method],  
  
    DEPN_RATE_tax as [Depreciation Rate],  
  
    StartDate as [Depreciation Start Date],  
  
    PurDate as [Purchase Date],  
  
    PONumber as [PO Number]  
  
from tblasset01
```

If importing to a NEW Rentalpoint database:

- You can import barcode tracked and non tracked inventory. RentalPoint will create the assets during the import. Please contact support@rentp.com for an import template.

There is no 'Undo Import' option, ensure you have a backup of your database before importing

- From the main menu Others-->Import/Export option from Rentalpoint main menu
-



RP Import Rental Data

Drag fields from 'Import Fields' and drop in 'Matching Fields'.

Import Fields	RentalPoint Fields	Matching Fields
Group Description	Is a Generic Item	
Product Category	Unit Weight	Unit Weight
Category Description	Unit Volume	Unit Volume
Product Code	Picture Filename	
Product Description	Config (Single/Pack/Macro)	
Printed Description	Hourly Rate	
Unit Volume	Half Day	
Unit Weight	Rate 1st Day	Rate1st Day
Unit Length	Rate Extra Days	Rate Extra Days
Unit Width	Rate Week	Rate Week
Unit Height	Rate Long Term	Rate Long Term
Cost price		
Rate1st Day		
Rate Extra Days		
Rate Week		
Rate Long Term		

Inventory Import Options

You can use the import tool to update asset information. If you're updating the asset serial number there may be maintenance records attached to the serial number. You can choose to update the maintenance records to reflect the new serial number, or leave the maintenance records as is.

Update Maintenance Records Leave Maintenance Records As Is

* - Denotes fields that are only related to the asset record

2 ↓ 1 ↓ 3 ↓

Match All Clear All Import Cancel